

◆ CONNECTOR OPTION		
MODEL NO.	CONNECTOR	MATING RECEPTACLE
01167-XXX-C0000	■ MS-3102E-14S-5P	MS-3106E-14S-5S
01169-XXX-C0000	■ MS-3102E-14S-5P	MS-3106E-14S-5S
01167-XXX-E0000	▲ MS-3102E-14S-6P	MS-3106E-14S-6S
01169-XXX-E0000	▲ MS-3102E-14S-6P	MS-3106E-14S-6S

NON-WESTERN REGIONAL

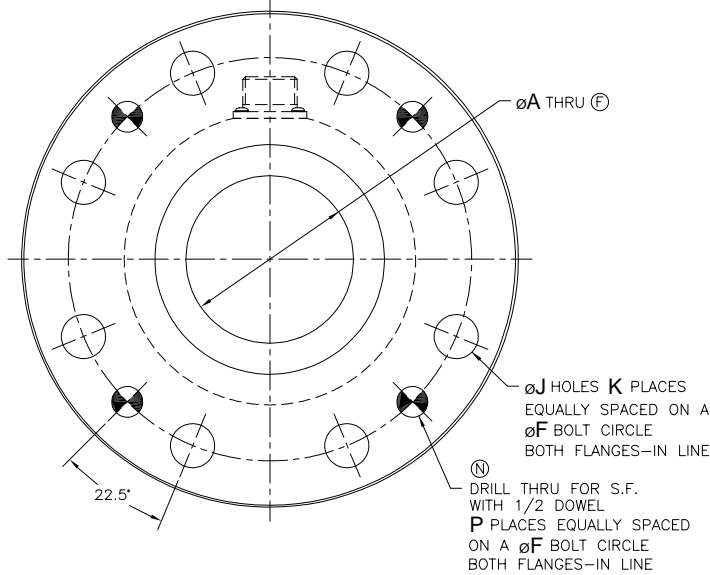
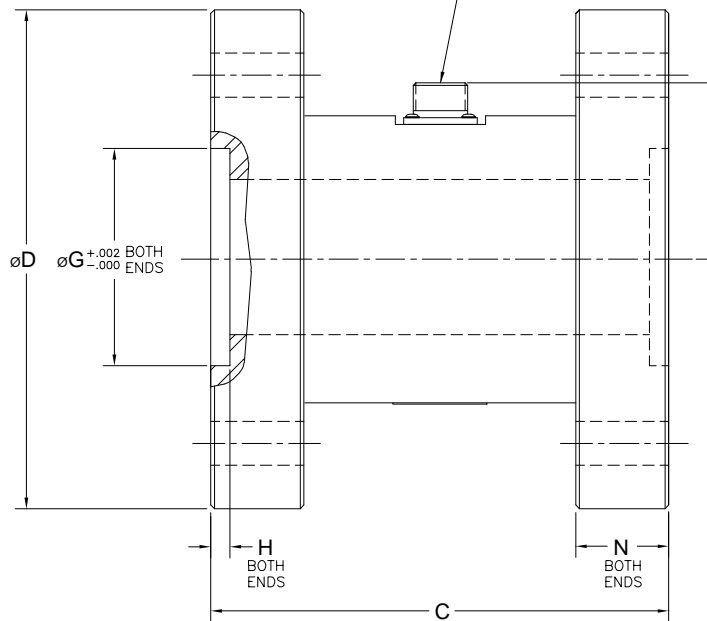
■ PIN CODE		▲ PIN CODE		□ PIN CODE		● PIN CODE			
PIN	FUNCTION	PIN	FUNCTION	PIN	COLOR	FUNCTION	PIN	COLOR	FUNCTION
A	+ EXC.	A	+ SIG.	A	RED	+ EXC.	A	RED	+ EXC.
B	+ SIG.	B	- SIG.	B	YELLOW	+ SIG.	B	YELLOW	+ SIG.
C	- SIG.	C	+ EXC.	C	WHITE	- SIG.	C	WHITE	- SIG.
D	- EXC.	D	- EXC.	D	BLACK	- EXC.	D	BLACK	- EXC.
E	N/C	E	+ EXC.	E	N/C		E	N/C	
		F	- EXC.	F	N/C		F	N/C	

PIN	COLOR	FUNCTION
A	RED	+ EXC.
B	YELLOW	+ SIG.
C	WHITE	- SIG.
D	BLACK	- EXC.
E	N/C	

PIN	COLOR	FUNCTION
A	RED	+ EXC.
B	YELLOW	+ SIG.
C	WHITE	- SIG.
D	BLACK	- EXC.
E	N/C	
F	N/C	

REV	DESCRIPTION	BY	DATE	CHK	ENG	REL DATE
A	REVISED CHART DIMS	DJN	2-18-92			
B	MODEL #'S CORRECTED	KKB	2-18-92	GP	GP	6-27-92
C	ADDED CONNECTOR/RECEPTACLE & L TO CHART	KKB	1-7-93	GP	GP	3-7-94
D	REMOVED MODEL 01167; RE-RECEPTACLE & MATING CONN. REVISED FOR MODEL: 01168	GMC	4-18-94	DS	DS	6-13-94
E	CORRECTED NM: .39 WAS .390					
F	ADDED 01167 MODELS .34 WAS .344; .12 WAS .125	KKB	6-27-94	DS	DS	8-24-94
	.13 WAS .12 (2 PLACES)	KKB	4-6-95	DS	DS	4-6-95
	.13 WAS .12 (2 PLACES)					
	ØA THRU WAS +.002/-000					
	ØA THRU WAS A 3 PLACE DEC					
G	01166-022 OUTPUT WAS 2.0	KKB	12-3-98	JMK	JMK	12-3-98
H	MODEL 01171-264 ADDED	GMC	8-15-01	JMK	JMK	8-16-01
J	EXT. LOAD VALUES ADDED	GMC	10-21-02			3-27-03
K	EXT. LOAD VALUES ADDED	GMC	6-16-04			8-30-04
L	MODELS 01167-XXX-E0000 & 01169-XXX-E0000 ADDED	GMC	11-17-09	DS	DS	11-17-09
M	WIRING CODES CLARIFIED	GMC	8-30-10			10-5-10
N	DOWEL HOLES ADDED FOR MODEL 01171	GMC	10-19-10	DS	DS	10-21-10

SEE CHART BELOW FOR CONNECTOR & RECEPTACLE



MODEL NO.	CAPACITY			EXTRANEOUS LOAD VALUES			
	N-M	lbf-in		a=b	c	d=e	f
01165-051	6	50					
01165-012	11	100					
01166-022	23	200	14.9	11.2	71.4	35.7	
01166-052	57	500	8.1	6.1	38.2	19.1	
01166-013	113	1,000	4.2	3.1	19.0	9.6	
01167-051	6	50					
01167-022	23	200					
01167-052	57	500	31.4	3.1	5.6	33.0	
01167-013	113	1,000	17.8	2.2	4.0	16.5	
01168-023	226	2,000	5.0	3.7	9.9	5.0	
01168-352	395	3,500	2.7	2.1	5.5	2.7	
01169-053	565	5,000	5.2	3.9	10.3	5.1	
01169-014	1,130	10,000	2.6	1.9	5.1	2.6	
01170-153	1,695	15,000	1.7	1.3	3.4	1.7	
01170-024	2,260	20,000	1.3	1.0	2.6	1.3	
01170-034	3,390	30,000	1.2	.87	1.7	.86	
01170-044	4,520	40,000	.87	.66	1.3	.64	
01170-054	5,650	50,000	.70	.53	1.0	.51	
01171-015	11,300	100,000	.37	.28	.51	.26	
01171-184	19,775	175,000	.30	.23	.29	.15	
01171-025	22,600	200,000	.27	.20	.26	.13	
01171-264	30,000	265,500	.09	.07	.08	.04	

SDI MODEL NUMBER	N-M	lbf-in	ØA	C	ØD	ØF	ØG	H	N	ØJ	L	K	P	OUTPUT (mV/V)	MATERIAL	CONNECTOR	MATING RECEPTACLE
01171-264-C0X00	30,000	265,500	3.00	8.50	9.75	8.000	4.000				4.36		SEE CHART *				
01171-025-C0X00	22,600	200,000															
01171-184-C0X00	19,775	175,000															
01171-015-C0X00	11,300	100,000															
01170-054-C0000	5,650	50,000	2.00	7.38	8.00	6.500	3.500	.31	1.50	.77	3.36						
01170-044-C0000	4,520	40,000															
01170-034-C0000	3,390	30,000															
01170-024-C0000	2,260	20,000															
01170-153-C0000	1,695	15,000															
01169-014-X0000	1,130	10,000															
01169-053-X0000	565	5,000															
01168-352-D0000	395	3,500															
01168-023-D0000	226	2,000															
01167-013-X0000	113	1,000															
01167-052-X0000	57	500															
01167-022-X0000	23	200															
01167-012-X0000	11	100															
01167-051-X0000	6	50															
01166-013-C0000	113	1,000															
01166-052-C0000	57	500															
01166-022-C0000	23	200															
01165-012-C0000	11	100															
01165-051-C0000	6	50															
			.62	2.25	3.00	2.500	1.250	.13	.38	.27							

01171-XXX-C0A00	4
01171-XXX-C0000	OMIT
MODEL NO.	P
★ DOWEL HOLE OPTION	

POLARITY: C.W. UPSCALE
SPECIFICATIONS ON DWG: 14654C0-*

INSTALLATION HOLLOW REACTION TORQUE		CHECKED BY A.C.	
FINISH	SCALE FULL	PROJ. ENG.	G.P.
MATRL. CHARTED		DRAWN BY	JHY
UNLESS OTHERWISE SPECIFIED DIM'S ARE IN INCHES X.X ±.03 X.XX ±.01 X.XXX ±.005 ANG. ±5°		DATE	11-25-91
		D.E. REVIEW	
		BY	
		DATE	
		DRAWING NUMBER	
Sensor Developments Inc. ORION, MI 48359			14528D0-N



Distributed by: Spare S.r.l.
Via Carlo Spagnolo, 4 - 27057 Varzi - Pavia - Italy
tel. +39-0383-54.51.51 - fax: +39-0383-54.50.51
<http://www.spare.it> - <http://www.spareonweb.com>
e-mail: sales@spare.it