

01100 Series

ROTARY SHAFT TORQUE SENSOR

These strain gage based sensors are designed to measure rotating torque in systems that undergo large angular displacements. Examples are motor shafts, fans, and crankshafts. These sensors incorporate a slip ring design to transmit the signals produced during operation.

SPECIFICATIONS

Capacity..... 100 to 10,000 in.lb. (See chart)
 Overload capacity..... 150% of F.S.
 Output at F.S..... 2.0 mV/V nominal
 Non-linearity..... 0.10 % of F.S.
 Hysteresis..... 0.10% of F.S.
 Zero balance..... 1.00% of F.S.
 Compensated temperature..... 70 to 170 °F
 Useable temperature..... -65 to +250 °F
 Temperature effect on zero..... 0.002% of F.S./ °F
 Temperature effect on span..... 0.002% of Rdg°F
 Bridge resistance..... 350 Ohms
 Excitation voltage, maximum..... 20 Vdc
 Maximum shaft speed..... 6,000 RPM
 Shaft material Alloy steel



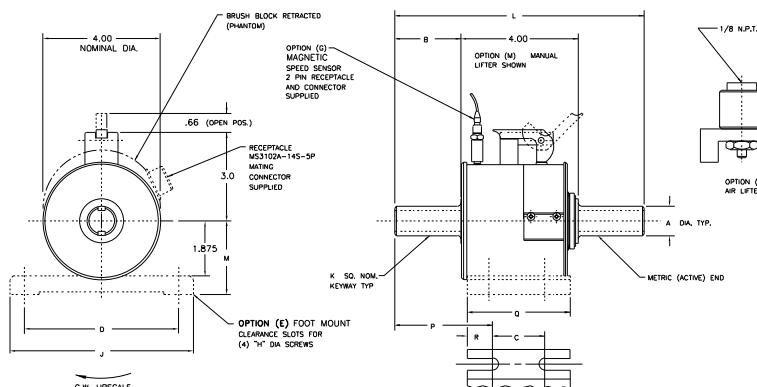
Shown with optional air operated brush lifter.

OPTIONS (Consult SDI for dimensions)
 For different end configurations,
 change model number from 01100 to:

Model	Non active end	Active end
01101	Keyed shaft	Female socket
01102	Keyed shaft	Flange
01103	Flange	Flange

DIMENSIONS (INCHES)

MODEL	CAPACITY	A +0.00	STANDARD			OPTION (L)			OPTION (E) ONLY						K	M +0.00 -0.01	
			L	P	B	L	P	B	C	D	H	J	Q	R			
01100-012	100	0.75														3.16	2.125
01100-022	200																
01100-052	500	1.00	8.50	3.32	2.25	10.00	4.07	3.00	1.56	4.0	1/4	4.75	3.28	0.86	1/4	2.500	
01100-013	1000																
01100-023	2000																
01100-053	5000	1.50	9.50	3.70	2.75	12.75	5.33	4.38	2.02	5.25	3/8	6.25	3.50	.74	3/8	2.500	
01100-014	10000																



Optional - Brush lifter to prolong brush life.



Distributed by: Spare S.r.l.
 Via Carlo Spagnolo, 4 - 27057 Varzi - Pavia - Italy
 tel. +39-0383-54.51.51 - fax: +39-0383-54.50.51
<http://www.spare.it> - <http://www.spareonweb.com>
 e-mail: sales@spare.it